

Managing the Negative Impacts of Wildlife Tourism on Wildlife: A Review

Chelsea L. Northrope and
Karen Higginbottom

© Chelsea Northrope and Karen Higginbottom 2001



Outline

Introduction

- Why Manage?

Methods

Review

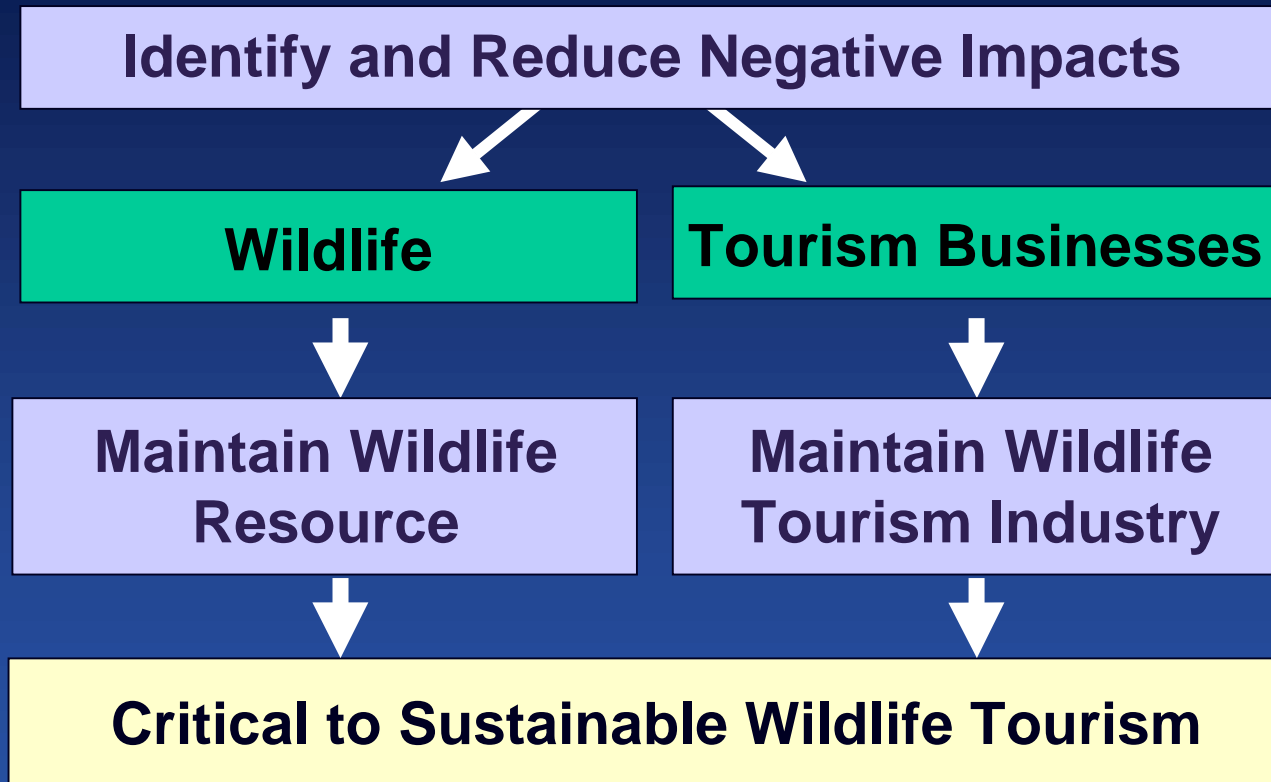
- What Needs To Be Managed?
- How To Manage?
- Monitoring
- How To Put All This Together?

Conclusion

Recommendations

Introduction

Why Do We Need To Manage?



Methods

- Literature research
- Informal interviews with government staff
- Semi-structured telephone interviews of senior conservation agency staff

Review

What Needs To Be Managed?

What To Manage?

```
graph TD; A[What To Manage?] --> B[Visitors and/or Operators]; A --> C[Wildlife and/or Habitats];
```

Visitors and/or
Operators

Wildlife and/or
Habitats

What Needs To Be Managed? ... (ctd)

What To Manage?

Visitors and/or Operators

Visitor

- Numbers
- Spatial Distribution
- Temporal Distribution
- Behaviour
- Expectations
- Attitudes

Design of Wildlife Tourism
Experiences

Involvement of Operators and
Tourists in Conservation
Activities

Wildlife and/or Habitats

Wildlife

- Behaviours
- Location of Wildlife

Habitats

- Food Availability
- Physical Environment
- Environmental Damage
- Wildlife Refuges

Review

How To Manage?

How To Manage?

Visitors and/or Operators

- External Regulation
- Industry and Individual Self-Regulation
- Economic Instruments
- Education
- Marketing
- Use of Environmentally Responsible Operators and Guides
- Cooperative Agreements

Wildlife and/or Habitats

- Physical Alterations to “Harden” Environment
- Active Management of Wildlife or Natural Environment

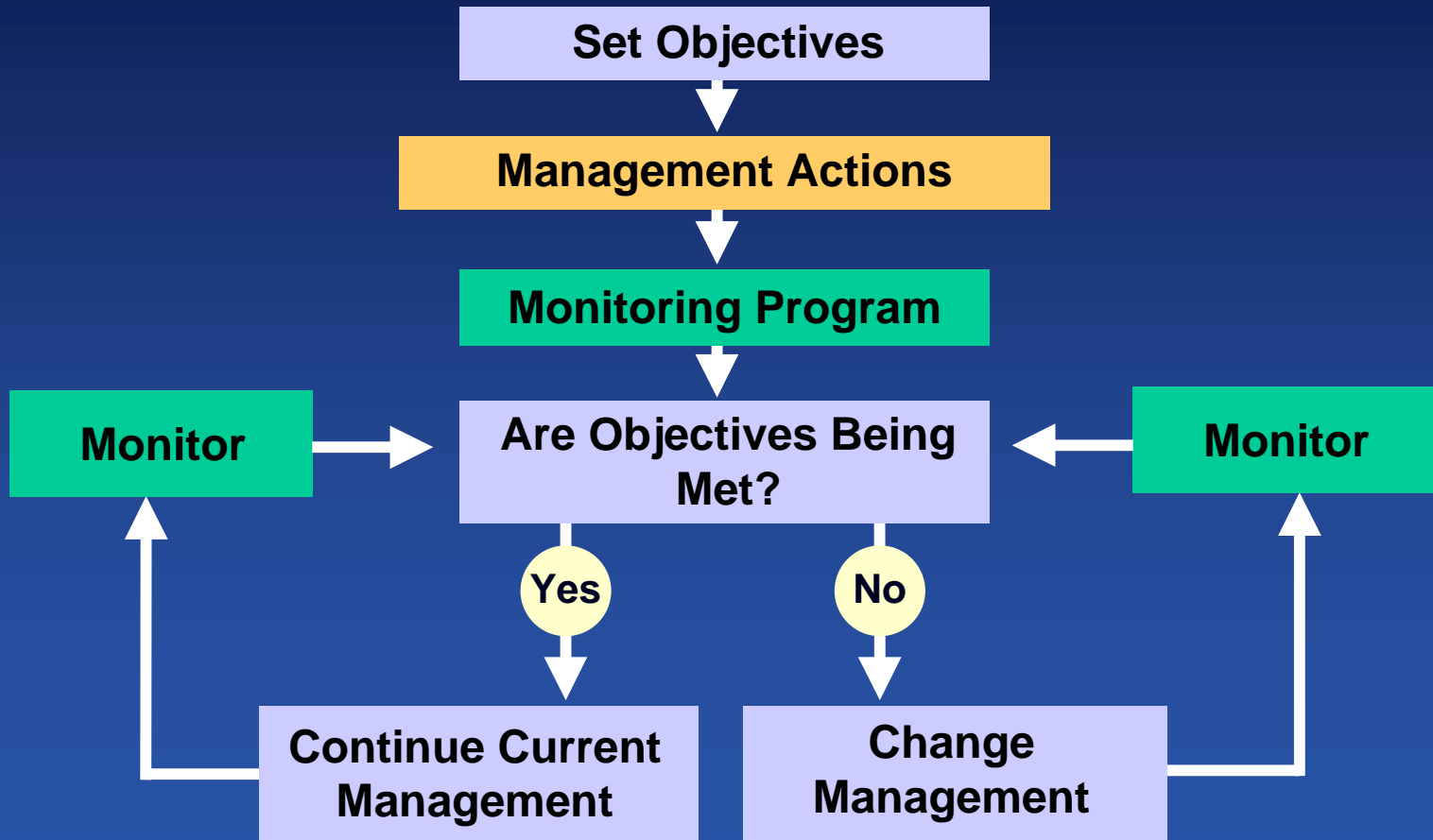
Review **Monitoring**

- Essential in managing negative impacts
- Little systematic application in Australia

Review

How To Put All This Together?

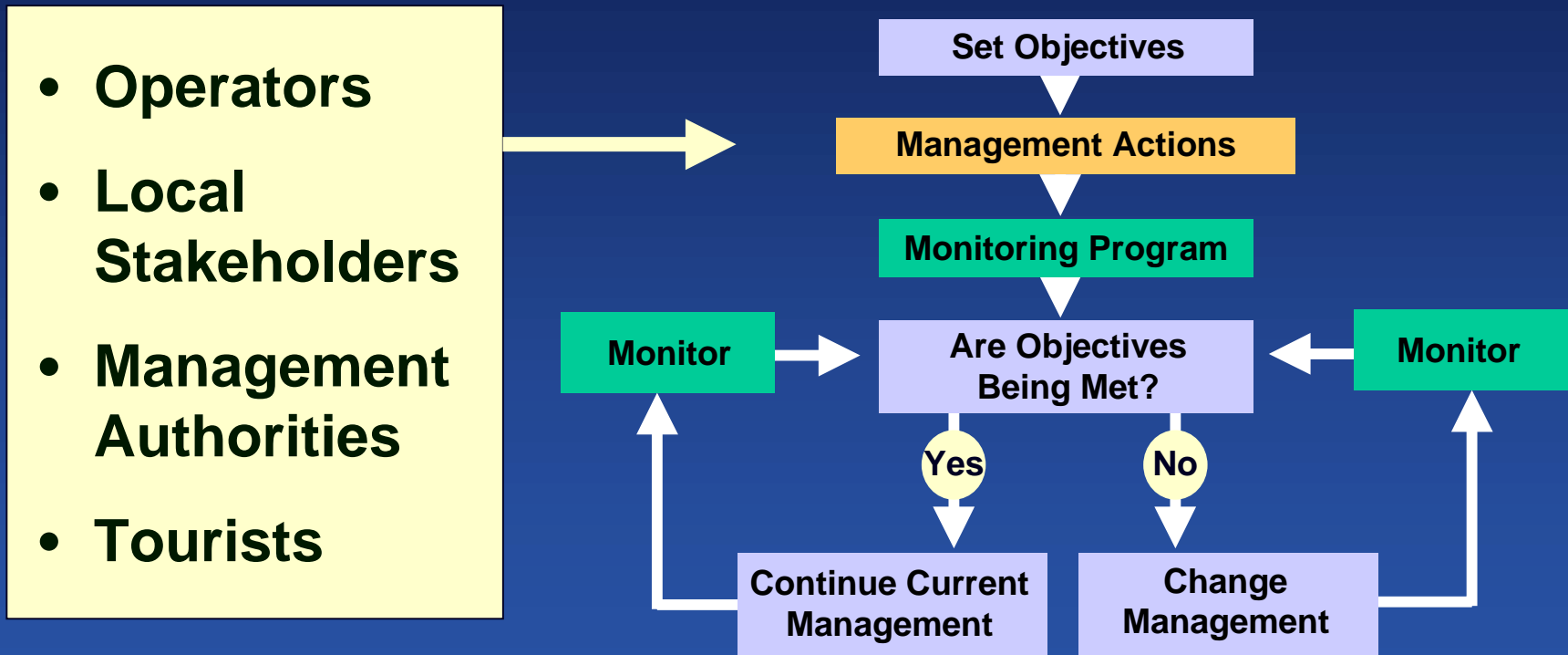
A Management Framework



Adapted from Hammit and Cole (1987)

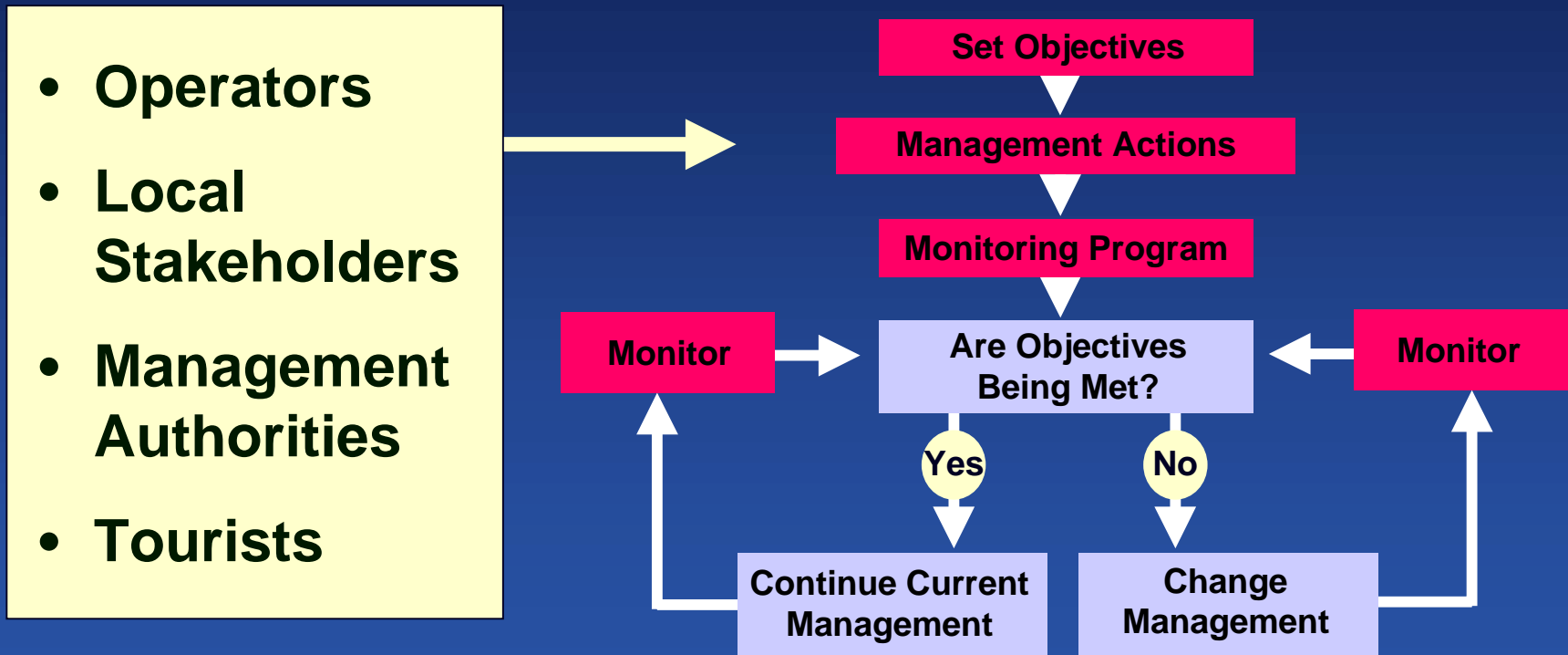
How To Put All This Together? ... (ctd)

A Management Framework



How To Put All This Together? ... (ctd)

A Management Framework



Conclusions

Ideal Management Steps

- Establish management framework
- Identify impacts
- Decide what to manage
- Decide methods to use
- Conduct monitoring
- Incorporate feedback mechanism

Conclusions

- Many different management approaches in existence
- No “best” system for every situation
- Scientific rigour Vs real world constraints
- Maintain wildlife resource = wildlife tourism industry

Recommendations

- Wide dissemination of management options
- User-friendly monitoring techniques and guidelines
- Use a mix of management techniques
- Prioritise management efforts
- Further research to fill knowledge gaps
- Greater adoption of effective management in Australia

More Information

Wildlife Tourism Status Assessment Report

Negative Effects of Wildlife Tourism
on Wildlife (2001)

Any Questions?